

FuTech Professional Services

MAXLOADER

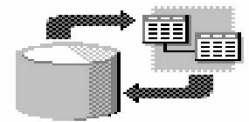


FuTech Egypt

6, Masged Al-Sahaba St.
Dokki, Cairo, Egypt

TEL: +237485952
+233365652

FAX: +2 02 37603536



MAXLOADER

Maximo 6x Data Upload & Update Tools

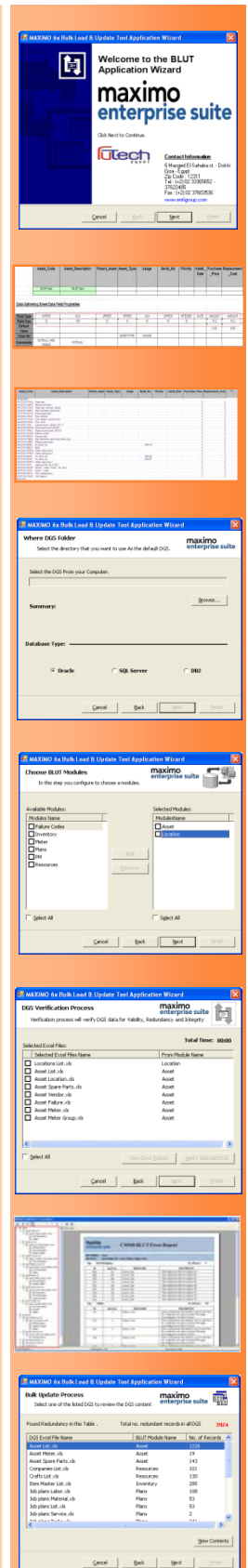
Ensuring your Maximo system is populated with high-quality data may be one of the most important considerations for any Maximo software implementation or upgrade.

Loading Data directly into Maximo database tables using the traditional loading techniques (Scripts) do not take Maximo Business object (MBO) rules & Data engineering into consideration, which could create potential data issues within the rest of the Maximo application. These kinds of issues can be difficult to diagnose, difficult to address & difficult to rectify specially if your Maximo system already operational.

FuTech- Egypt Maximo Data Upload & Update Tools inputs data into Maximo the same way if you create the data records manually through Maximo Software’s standard front – end screens. Thus helping to ensure the same integrity validation and protection you would have using manual creation.

FuTech- Egypt Maximo Data Upload & Update Tools offers the following key benefits when compared to the traditional loading techniques

- **Support Multiple database engine MS SQL Server, Oracle & IBM DB2**
- **Reduced or eliminated significantly the time needed to write and test data loading scripts especially for implementation requires significant quantities of data loading.**
- **Checking data Validation, checking data integrity and checking data redundancy before loading even loading data into Maximo database.**
- **Supporting patch data loading, this will match the real site data collection environment.**

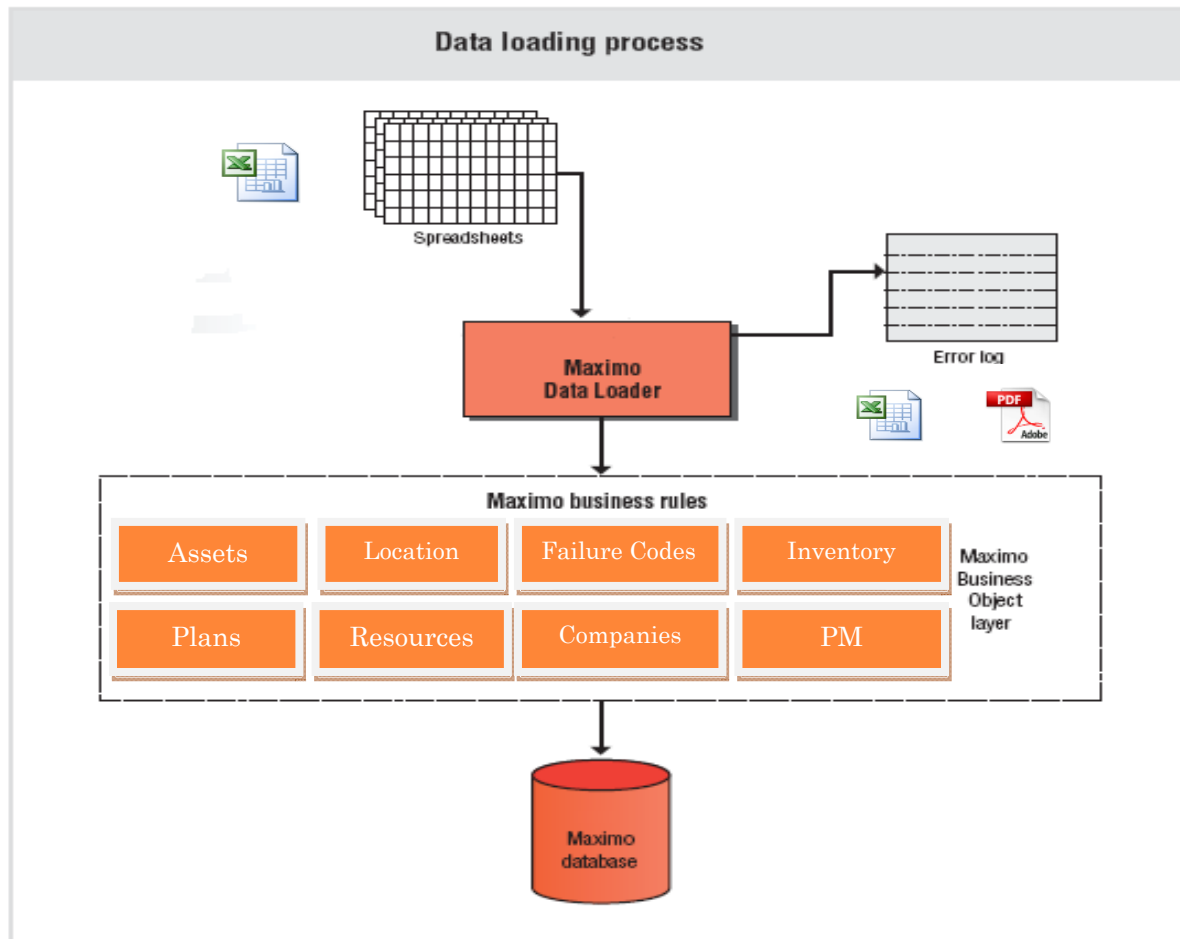


- *Supporting data updating for the existing Maximo database records*
- *Ensure cleaner and higher quality data which lead to proper operation of Maximo Asset management software.*

MAXLOADR Functionality

1. Support Multi Organization Multi Site data loading.
2. Support Maximo Building Data as following:-
 - a. **Assets** (Asset List, Asset Location, Asset Failure, Asset Spare Parts, Asset Vendor, Asset Meter & Asset Meter Group).
 - b. **Location** (Location List)
 - c. **Failure Codes** (Failure class , Failure Codes , Problems , Causes & Remedy)
 - d. **Inventory** (Item Master List, Service Item, Tool List, Storeroom Items & Storeroom Tools)
 - e. **Preventive Maintenance (PM)** (PM List, PM Time Base, PM Meter Base, PM Job Plan Sequence)
 - f. **Plans** (Job Plan List, Job Plan Tasks, Job Plan Material, Job Plan Labor, Job Plan Tools)
 - g. **Resources** (People List, Companies List, Labor List, Craft List & Labor Craft)
3. Source input data from Excel files pre designed for data collection purpose (Data Gathering Sheets “DGS”) delivered with MAXLOADER.
4. Simulate data load routines to support data verification (Validation, integrity and redundancy) required by Maximo business rolls prior to perform the actual uploading of the database.
 - a. **VALIDITY Process:** which ensure that no Mandatory data element is missing, no data element mismatching database attributes properties.
 - b. **REDANDUNCY Process:** which ensure that no data record duplicated within the DGS or duplicated with the Maximo Database?
 - c. **INTEGRITY Process:** which ensure that all engineering relationship is maintained within DGS or between DGS & Maximo Database?
5. No need to use intermediate database for data verification.
6. MAXLOADER use wizard technique for easy use & easy manages.
7. Error detection mechanism includes well informative error Library.

8. Error Log report hierarchy structured by (Maximo MBO, error type & DGS Related) populated in Pdf format with export facility to Excel format for easy handling.
9. Error log report indicates the error line number in the DGS for easy allocation and easy error rectification.
10. MAXLOADER support Bulk Update to Maximo Existing Database.



Additional Professional Service Products:

- [Inventory Physical Count Loader.](#)
- [Maximo GSM, SMS Notification Gateway.](#)
- [Maximo Bar Code Application.](#)
- [Maximo Arabization Tools](#)